

1 piece System

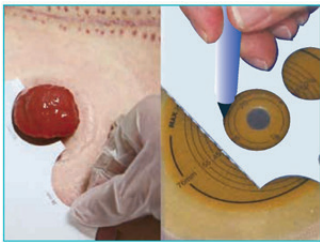
Changing Guide

i If you experience an allergic reaction, please contact your healthcare professional. Coloplast accepts no liability for any injury or loss that may arise if this product is used in a manner contrary to Coloplast's current recommendations.

Preparation (1-Piece)



- Prepare all materials needed



- Use the measuring guide to measure the size of your stoma, then, draw the circle on the baseplate.



- Cut a hole in the baseplate to fit the exact size and shape of the stoma using a pair of curved scissors and the cutting guide on the baseplate. You can use the enclosed stoma measuring guide to measure the size and shape of the stoma. An exact fit between the hole and the stoma is important to reduce the risk of leakage and skin problems.
- Thoroughly clean the stoma and surrounding skin area. The skin must be completely dry before application of the baseplate.
- Please remember to close the outlet before use.

Application (1-Piece)



- Peel off the protective film from the adhesive.



- Fold the adhesive backwards, align the adhesive around the stoma and press it firmly onto the skin.
- Apply a small amount of pressure on the bag to ensure fast adhesion and a perfect fit between the adhesive and the skin around the stoma.
- Massage the baseplate with your finger for 5 to 10 mins.

Closing the outlet (1-Piece)



- Place the bag on a table with the baseplate pointing downwards. Bend the lower, small plate over the upper, large plate of the outlet. Fold the outlet twice until the velour plate is in line with the velcro ears.
- Seal the outlet by folding the velcro ears onto the velour plate and press firmly.

Emptying / Draining Open Bag (1-Piece)



- Open the outlet in the position where you want to empty the bag. Allow the contents to run out while you control the emptying with your fingers

Emptying and Draining Urostomy Bag (1-Piece)



- Hold the plug/end of the outlet upwards and squeeze the outer end of outlet, pull out the plug, and relax your hold on the outlet and then drain the bag. After complete drainage, ensure that the outlet is firmly closed with the plug fully inserted.

Removal (1-Piece)



- Gently remove the bag by pulling the removal ear on the adhesive away from the abdomen and roll the adhesive slowly downwards
- Apply light pressure on your skin with your free hand to help removal.
- The product is intended for single use only and should be disposed of in accordance with local guidelines, e.g. with normal household waste.
- Do not flush the product down the toilet.

For free samples and/or information on your choices of ostomy appliances, please call: 6235 5933 or visit www.coloplast.sg

Ostomy Care / Continence Care / Wound & Skin Care / Urology Care

Coloplast A/S Singapore

Telephone: 6235 5933 | www.coloplast.sg

The Coloplast logo is a registered trademark of Coloplast A/S. © [2019-03.] All rights reserved Coloplast A/S. PM-03699

