



# Coloplast Wound Care

Product overview

Our purpose

# Fewer days with wounds

What makes Coloplast special is our willingness to listen to the people who use our products, and act on what we learn.

By listening, we gain a better understanding of the challenges healthcare professionals face when caring for wounds, and of new ways to improve quality of life for patients living with wounds.

This knowledge inspires the *intelligent design* of our products. By combining advanced healing technology with user-friendliness we promote optimal conditions for keeping skin healthy and helping wounds heal. Our award-winning design is supported by clinical evidence.

We recognise that caring for wounds and skin can be a complex and uncertain process. So we dedicate ourselves to sharing *deeper knowledge and guidance* through our internationally endorsed education programmes with the goal of raising the global standard of care. The guidance and tools we provide are practical and intuitive, enabling healthcare professionals to efficiently and confidently manage wounds and skin complications.

Through *closer collaboration* with healthcare professionals we build long-lasting and rewarding partnerships. As a present and competent partner, we tailor solutions to be sensitive to individual needs, and optimise treatment programmes with the aim of increasing both the effectiveness of care and the certainty of successful outcomes.

Together, we are united by a shared purpose and passion to achieve **Fewer days with wounds.**



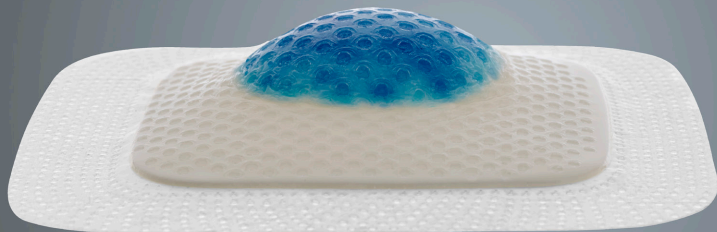


*“I remember I was hospitalised on the 3<sup>rd</sup> floor. The doctor was planning to amputate my leg to the knee. Monica changed the whole treatment and told the management that she would take care of my foot for one month, and then they could reassess the situation. She brought a light at the end of the tunnel. Her dedication saved me”*

Celso, 55, Brazil, Diabetic foot ulcer

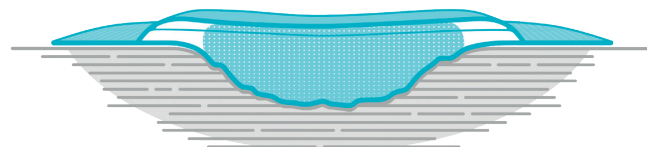
<b>3DFit Technology</b>	<b>7</b>
<b>Treatment of non-infected wounds</b>	<b>8</b>
Biatain® Silicone	9
Biatain® Silicone Multishape	10
Biatain® Silicone Lite	12
Biatain® Non-Adhesive	13
Biatain® Adhesive	14
Biatain® Soft-Hold	15
Biatain® Super	16
Biatain® Alginate	17
<b>Treatment of infected wounds</b>	<b>18</b>
Biatain® Silicone Ag	19
Biatain® Ag	20
Biatain® Alginate Ag	21
<b>Treatment of painful wounds</b>	<b>22</b>
Biatain® Ibu	23
<b>Protection of wound and skin</b>	<b>25</b>
Comfeel® Plus Transparent	26
Comfeel® Plus	27
Physiotulle®	28
Physiotulle® Ag	29
Purilon®	30
Atrac-Tain®	31
<b>Triangle of Wound Assessment®</b>	<b>32</b>
<b>HEAL</b>	<b>33</b>
<b>References</b>	<b>34</b>
<b>Notes</b>	<b>35</b>

*Biatain® Silicone with 3DFit Technology conforms to the wound bed to fill the gap and reduce exudate pooling for optimal healing conditions.*



*A perfect fit. Every time.*

## The 3DFit Technology fills the gap and reduces exudate pooling



### Conforms to the wound bed

Upon contact with exudate, the foam conforms to the wound bed and reduces pooling.



### Absorbs vertically

Microcapillaries within the foam absorb the exudate vertically.



### Retains exudate

The exudate is locked away and retained even under compression, reducing risk of leakage and maceration of the wound edges and periwound skin.



# Treatment of non-infected wounds

## Biatain® Silicone



A perfect fit. Every time.

Biatain Silicone is a soft and conformable polyurethane foam dressing with a bacteria- and water proof top film, a lock-away layer and a gentle silicone adhesive layer. It can be used on a broad range of exuding chronic and acute wounds making Biatain Silicone the obvious choice for moist wound healing of commonly occurring wounds.<sup>1,2</sup>

- Conforms to the wound bed
- Absorbs vertically
- Retains exudate



### Usage

Biatain Silicone is indicated for a wide range of exuding chronic and acute wounds. They include leg ulcers, pressure ulcers, non-infected diabetic foot ulcers, donor sites, postoperative wounds and traumatic wounds. It can be used in combination with compression therapy and may be left in place for up to 7 days.

### Biatain Silicone

Item code	Size in cm.
33434	7.5 x 7.5
33435	10 x 10
33436	12.5 x 12.5
33437	15 x 15
33438	17.5 x 17.5
33400	10 x 20
33401	10 x 30

### Biatain Silicone Sacral

Item code	Size in cm.
33404	15 x 19
33405	25 x 25



### Biatain Silicone Heel

Item code	Size in cm.
33406	18 x 18



### Biatain Silicone Multishape

Item code	Size in cm.
33408	14 x 19.5



reddot award 2017  
winner

# Biatain® Silicone Multishape

Award-winning, user-friendly design  
also for difficult to dress areas



reddot award 2017  
winner



Scan for application video

## Preparation

- Cleanse the wound and periwound skin in accordance with local guidelines, e.g. lukewarm water or physiological saline solution
- Gently dry the periwound skin
- If any film, cream, ointment or similar product is used, allow the periwound skin to dry before applying the product

## Application



Use protective films to avoid touching adhesive side and ensure aseptic application.  
Remove center protective film.



Apply adhesive side towards wound.



Remove remaining protective films, one at a time, gently securing each side to ensure an even and smooth fit on skin.



Gently run your fingers around border to confirm securement.



Please refer to the Instructions for Use (IFU) packaged with the product for further information.

# Biatain® Silicone Lite



Biatain Silicone Lite is a thin, ultra flexible and absorbent polyurethane foam dressing with a bacteria- and water proof top film and a soft silicone adhesive layer. The soft and thin foam pad at skin level makes it comfortable to wear and is suited for users that need increased mobility.<sup>2,5</sup>

- Conforms to the wound bed
- Absorbs vertically
- Retains exudate




## Usage

Biatain Silicone Lite can be used for a wide range of non-to low exuding chronic and acute wounds. They include leg ulcers, pressure ulcers, non-infected diabetic foot ulcers, donor sites, postoperative wounds and traumatic wounds. It can be used in combination with compression therapy and may be left in place for up to 7 days.

## Biatain Silicone Lite

Item code	Size in cm
33444	7.5 x 7.5
33445	10 x 10
33446	12.5 x 12.5
33452	5 x 5
33453	5 x 12.5



# Biatain® Non-Adhesive



Biatain Non-Adhesive is a soft polyurethane foam dressing for extra fragile skin that effectively absorbs and retains wound exudate. This ensures a moist environment for healing of exuding wounds.

- Conforms to the wound bed
- Absorbs vertically
- Retains exudate



## Usage

Biatain Non-Adhesive can be used for a wide range of exuding wounds, including leg ulcers, pressure ulcers, noninfected diabetic foot ulcers, second degree burns, donor sites, postoperative wounds and skin abrasions. Biatain Non-Adhesive can also be used in combination with compression therapy.

## Biatain Non-Adhesive

Item code	Size in cm
6105	5 x 7
3410	10 x 10
3412	10 x 20
3413	15 x 15
3416	20 x 20

# Biatain® Adhesive



Biatain Adhesive is a soft and conformable polyurethane foam dressing that effectively absorbs and retains wound exudate.<sup>1-4</sup> This ensures a moist environment for healing of exuding wounds.<sup>9,10</sup>

- Conforms to the wound bed
- Absorbs vertically
- Retains exudate



## Usage

Biatain Adhesive can be used for a wide range of exuding wounds, including leg ulcers, pressure ulcers, second degree burns, donor sites, postoperative wounds and skin abrasions. Biatain Adhesive can be used in combination with compression therapy.

## Biatain Adhesive

Item code	Size in cm
33462	7.5 x 7.5
33430	10 x 10
33420	12.5 x 12.5
33421	15 x 15
33423	18 x 18
33426	18 x 28

## Biatain Adhesive Sacral

Item code	Size in cm.
33483	17 x 17
33485	23 x 23



## Biatain Adhesive Contour

Item code	Size in cm.
33486	Ø17



## Biatain Adhesive Heel

Item code	Size in cm.
33488	19 x 20



DRESSING SHOULD BE STORED IN HORIZONTAL POSITION.

# Biatain® Soft-Hold



Biatain Soft-Hold is a soft and conformable polyurethane foam dressing with an adherent layer covering less than 50% of the foam surface. This allows both hands to be free during dressing application and removal.

- Conforms to the wound bed
- Absorbs vertically
- Retains exudate



## Usage

Biatain Soft-Hold can be used for a wide range of exuding wounds, including leg ulcers, pressure ulcers, second-degree burns, postoperative wounds and skin abrasions. Biatain Soft-Hold can be used in combination with compression therapy. Biatain Soft-Hold should not be used for donor sites.

## Biatain Soft-Hold

Item code	Size in cm
3470	10 x 10
3473	5 x 7
3475	15 x 15
3472	10 x 20



# Biatain® Super

Biatain Super is a highly absorbent hydrocapillary dressing providing a moist wound healing environment for exuding wounds. It is available in both an adhesive and non-adhesive version.

- Moist wound healing environment for faster healing<sup>6-8</sup>
- Suitable for highly exuding wounds<sup>7,9</sup>
- All-in-one simple to use wound dressing<sup>6,9</sup>



## Usage

Biatain Super can be used for the treatment of a wide range of exuding wounds, including leg ulcers, pressure ulcers, diabetic foot ulcers, second degree burns, surgical wounds and skin abrasions. Biatain Super is suitable for use under compression therapy.

### Biatain Super, Non-Adhesive

Item code	Size in cm
4630	10 x 10
4632	12.5 x 12.5
4635	15 x 15
4645	12 x 20
4639	20 x 20



### Biatain Super, Adhesive

Item code	Size in cm
4610	10 x 10
4612	12.5 x 12.5
4615	15 x 15
4625	12 x 20
4620	20 x 20



DRESSING SHOULD BE STORED IN HORIZONTAL POSITION.

# Biatain® Alginate

Biatain Alginate is a highly absorbent alginate dressing for moderately to heavily exuding wounds of many sizes, shapes and depths.

- Recommended for cavity filling<sup>10</sup>
- High dressing integrity<sup>11</sup>
- Reduced risk of leakage and maceration
- Documented haemostatic effect<sup>12,13</sup>



## Usage

Biatain Alginate can be used on moderate to heavily exuding partial to full thickness wounds. Biatain Alginate may assist in supporting the control of minor bleeding in superficial wounds. Biatain Alginate can be used with compression therapy. Biatain Alginate should not be used on dry or lightly exuding wounds or to control heavy bleeding. Biatain Alginate is indicated for pressure ulcers, venous and arterial leg ulcers, diabetic ulcers, cavity wounds, lacerations, skin abrasions, graft and donor sites, post operative surgical wounds, superficial and partial thickness burns.

### Biatain Alginate

Item code	Size in cm
3705	5 x 5
3710	10 x 10
3715	15 x 15
3740	3 x 44 Filler



# Treatment of infected wounds

## Biatain® Silicone Ag



Combats infection and biofilms where it matters

Biatain Silicone Ag conforms to the wound bed to reduce exudate pooling and delivers Ag at the wound bed. Biatain Silicone Ag has been shown to kill 99.99% of mature biofilms\* (*P. aeruginosa*) and to prevent biofilm formation (shown in vitro).<sup>14</sup> The dressing is also effective against a broad spectrum of bacteria and fungi for up to 7 days.<sup>14</sup>

- Kills 99.99% of mature biofilms\*
- Conforms and delivers Ag at the wound bed
- Absorbs vertically, triggering the release of Ag
- Retains exudate, reducing the risk of maceration



### Usage

Biatain Silicone Ag is indicated for a wide range of low to highly exuding wounds with delayed healing due to bacteria or wounds at risk of infection. This includes acute wounds such as second degree burns, donor sites, postoperative wounds and traumatic wounds, and chronic wounds such as leg ulcers, pressure ulcers and diabetic foot ulcers.

### Biatain Silicone Ag

Item code	Size in cm
39636	7.5 x 7.5
39637	10 x 10
39638	12.5 x 12.5
39639	15 x 15
39640	17.5 x 17.5
39644	10 x 20
39645	10 x 30

### Biatain Silicone Ag Sacral

Item code	Size in cm.
39650	15 x 19
39651	25 x 25



### Biatain Silicone Ag Heel

Item code	Size in cm.
39652	18 x 18



\* Mature biofilms are defined as minimum 24 hours old.

# Biatain® Ag



## Combats infection and biofilms where it matters

Biatain Ag conforms to the wound bed to reduce exudate pooling and delivers Ag at the wound bed. Biatain Ag has been shown to kill 99.99% of mature biofilms\* (*P. aeruginosa*) and to prevent biofilm formation (shown in vitro).<sup>14</sup> The dressing is also effective against a broad spectrum of bacteria and fungi for up to 7 days.<sup>14</sup>

- Kills 99.99% of mature biofilms\*
- Conforms and delivers Ag at the wound bed
- Absorbs vertically, triggering the release of Ag
- Retains exudate, reducing the risk of maceration



### Usage

Biatain Ag foam dressings are indicated for a wide range of exuding wounds including leg ulcers, pressure ulcers, second-degree burns, donor sites, postoperative wounds and traumatic wounds with delayed healing due to bacteria, or where there is a risk of infection. Biatain Ag Non-Adhesive foam dressings are additionally indicated for diabetic foot ulcers.

### Biatain Ag Non-Adhesive

Item code	Size in cm
5105	5 x 7
9622	10 x 10
9623	10 x 20
9625	15 x 15
9626	20 x 20
9628	5 x 8 Cavity



### Biatain Ag Adhesive

Item code	Size in cm
9631	7.5 x 7.5
9632	12.5 x 12.5
9635	18 x 18
9641	23 x 23 Sacral
9643	19 x 20 Heel



\* Mature biofilms are defined as minimum 24 hours old.

# Biatain® Alginate Ag

Biatain Alginate Ag is a highly absorbent silver alginate dressing for moderately to heavily exuding infected wounds of many sizes, shapes and depths.

- Recommended for cavity filling for infected wounds<sup>10</sup>
- Patented wound dressing containing a silver complex with a broad antimicrobial profile<sup>16</sup>
- High dressing integrity<sup>11</sup>
- Reduced risk of leakage and maceration
- Documented haemostatic effect<sup>12,13</sup>



### Usage

Biatain Alginate Ag can be used on moderate to heavily exuding partial to full thickness wounds. Biatain Alginate Ag may assist in supporting the control of minor bleeding in superficial wounds. Biatain Alginate Ag may be used on infected wounds or wounds at risk of infection. Biatain Alginate Ag can be used under compression bandages. Biatain Alginate Ag should not be used on dry or lightly exuding wounds or to control heavy bleeding. Biatain Alginate Ag is indicated for post-operative wounds, trauma wounds (dermal lesions, trauma injuries or incisions), leg ulcers, pressure ulcers, diabetic ulcers, graft and donor sites, cavity wounds, superficial and partial thickness burns.

### Biatain Alginate Ag

Item code	Size in cm
3755	5 x 5
3760	10 x 10
3765	15 x 15
3780	3 x 44 Filler
3790	20 x 30



# Treatment of painful wounds

## Biatain® Ibu

Biatain Ibu is a soft and flexible absorbent foam dressing containing ibuprofen.

- Soft and flexible dressing
- Combines moist wound healing with local release of ibuprofen<sup>17</sup>
- Wound healing does not have to be painful<sup>17-20</sup>



### Usage

Biatain Ibu is indicated for a wide range of low- to highly exuding wounds. This includes acute wounds such as second degree burns, donor sites, postoperative wounds and traumatic wounds; and chronic wounds such as leg ulcers, pressure ulcers and non-infected diabetic foot ulcers. Biatain Ibu is suitable for use in combination with compression therapy. Biatain Ibu Soft-Hold is contra-indicated for donor sites.

### Biatain Ibu Non-Adhesive

Item code	Size in cm
34105	5 x 7
34110	10 x 10
34112	10 x 20
34115	15 x 15
34120	20 x 20

### Biatain Ibu Soft-Hold

Item code	Size in cm
34140	10 x 10
34142	10 x 20
34165	15 x 15

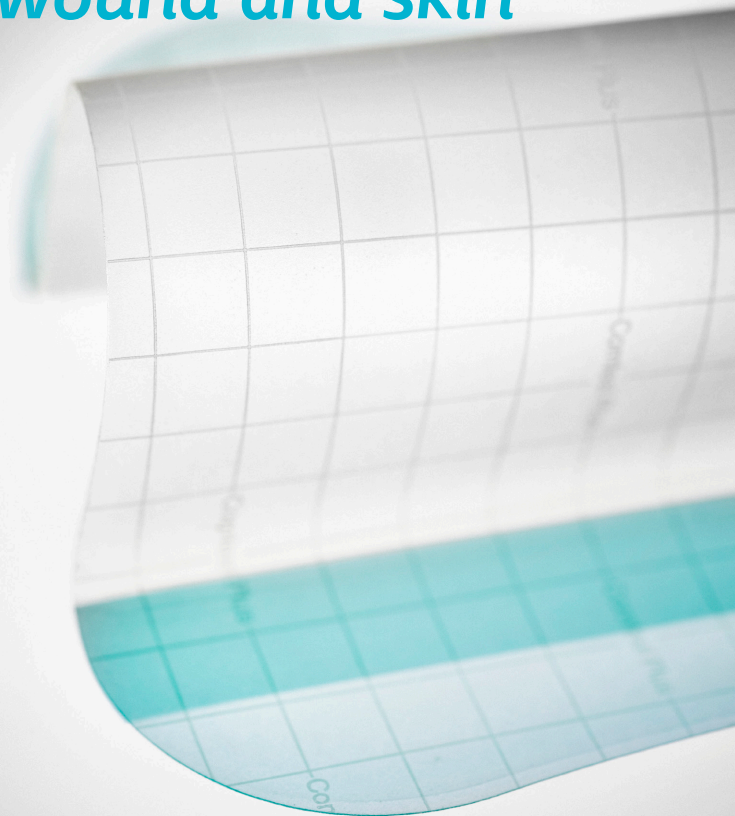




*"These dressings have a dual purpose for me. It is full time protection and full time treatment when I need it – and I can manage it totally independently. So it means everything to me and makes me live a life with my leg despite the injury. That's the bottom line."*

*Janice, 63, United Kingdom*

## Protection of wound and skin

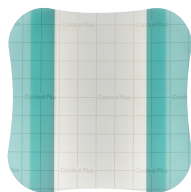




# Comfeel® Plus Transparent

Comfeel Plus Transparent is a thin and flexible semi-permeable hydrocolloid dressing.

- Ensured protection<sup>21-23</sup>
- Wound monitoring<sup>24,25</sup>
- User-friendly design<sup>23,26,27</sup>

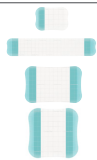


## Usage

Comfeel Plus Transparent can be used for treatment of non to low exuding chronic wounds and superficial acute wounds in the final stages of wound healing. Comfeel Plus Transparent is indicated for pressure ulcers, leg ulcers, superficial burns, donor sites, traumatic wounds, postoperative wounds, and skin abrasions. The dressing can stay on the wound for up to 7 days depending on the specific wound characteristics.

### Comfeel Plus Transparent

Item code	Size in cm
33530	5 x 7
33547	5 x 15
33548	5 x 25
33536	9 x 14
33537	9 x 25
33533	10 x 10
33517	13 x 13



Item code	Size in cm
33539	15 x 15
33542	15 x 20
33518	18 x 18
33545	20 x 20
33538	22.5 x 22.5

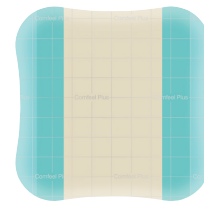


DRESSING SHOULD BE STORED IN HORIZONTAL POSITION.

# Comfeel® Plus

Comfeel Plus is a semi-permeable hydrocolloid dressing with calcium alginate

- Ensured protection<sup>21-23</sup>
- Wound monitoring<sup>24,25</sup>
- User-friendly design<sup>23,26,27</sup>



## Usage

Comfeel Plus can be used for treatment of low to moderately exuding chronic wounds and superficial acute wounds in the final stages of wound healing. Comfeel Plus is indicated for pressure ulcers, leg ulcers, superficial burns, donor sites, post-operative wounds, and skin abrasions. The dressing can stay on for up to 7 days depending on the specific wound characteristics.

### Comfeel Plus

Item code	Size in cm
33146	4 x 6
33110	10 x 10
33115	15 x 15
33291	13 x 13
33294	18 x 18
33297	22,5 x 22,5
33285	17.5 x 17.5 Sacral

### Comfeel Plus, Contour

Item code	Size in cm
33280	6 x 8
33283	9 x 11



### Comfeel Plus, Pressure Relief

Item code	Size in cm
33350	Ø7
33353	Ø10
33356	Ø15

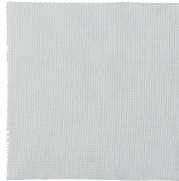


DRESSING SHOULD BE STORED IN HORIZONTAL POSITION.

# Physiotulle®

Physiotulle is a hydrocolloid based non-adherent wound contact layer to promote faster healing and atraumatic dressing changes.

- Easy to handle and easy to use
- Comfort and protection
- Supports faster healing<sup>15</sup>



## Usage

Physiotulle is indicated for low to highly exuding chronic and acute wounds; superficial burns, donor sites, postoperative wounds, skin abrasions, pressure ulcers and leg ulcers. Can be used with a broad range of absorbent secondary dressings and also under compression therapy.

## Physiotulle

Item code	Size in cm
3910	10 x 10
3915	15 x 20
3920	15 x 15
3912	10 x 20

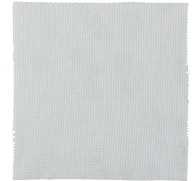
DRESSING SHOULD BE STORED IN HORIZONTAL POSITION.

\*Compared to traditional wound treatment

# Physiotulle® Ag

Physiotulle Ag is a hydrocolloid based non-adherent wound contact layer with silver, designed to prevent and control wound infection to promote faster wound healing.

- Easy to handle and easy to use
- Comfort and protection
- Sustained and controlled silver release
- Supports faster healing<sup>32,33</sup>



## Usage

Physiotulle Ag is indicated for low to highly exuding chronic and acute wounds. Physiotulle Ag can be used to progress wounds with delayed healing due to critical colonization or where risk of infection. Is safe for use with MRI.<sup>28</sup>

## Physiotulle Ag

Item code	Size in cm
3926	10 x 10
3927	15 x 15

DRESSING SHOULD BE STORED IN HORIZONTAL POSITION.

\*Compared to traditional wound treatment

# Purilon®

Purilon is a gentle hydrogel consisting of natural ingredients without any additives. It is used for wounds that need effective and gentle debridement of necrotic tissue thereby paving the way for faster wound healing.

- A match of hydrating and absorbing properties<sup>11</sup>
- Easy to apply and remove
- Minimized risk of leakage and maceration



## Usage

Purilon gel is indicated for dry and sloughy necrotic wounds as well as wounds with a mix of necrotic and granulated tissue such as leg ulcers, pressure ulcers, non-infected diabetic foot ulcers, and it may be used on 1<sup>st</sup> and 2<sup>nd</sup> degree burns. The gel may be used throughout the healing process to provide a moist healing environment. Purilon gel should be used in conjunction with a secondary dressing.

## Purilon

Item code	Size in gr.
3906	8 gr. applicator
3900	15 gr. applicator
3903	25 gr. applicator

# Atrac-Tain®

Atrac-Tain is a moisturising cream that was developed for diabetic patients and has been proven to be effective in the prevention and treatment of xerosis on the feet of these patients.<sup>29</sup>

- Exfoliates and softens severely dry, cracked, calloused skin
- Effective help for the prevention of xerosis and fissures
- Contains 10% Urea and 4% Lactic Acid (AHA) for keratolytic effect



## Usage

In the beginning of the treatment, a thin layer of cream is massaged into the skin 2-3 times daily. Then a treatment once daily secures that the skin is kept elastic and strong. Should not be used between the toes. The cream is easy to use and leaves the skin non-greasy.

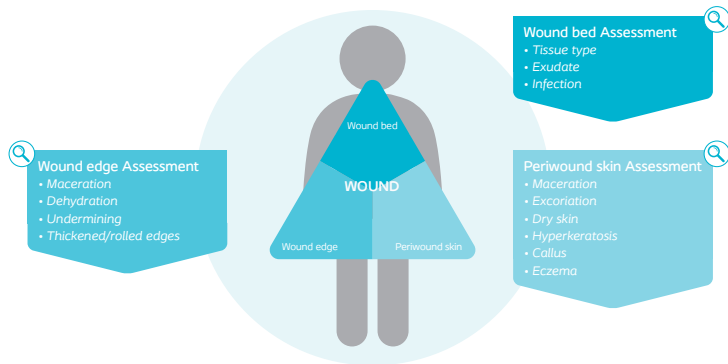
## Atrac-Tain

Item code	Size in ml.
4738	75 ml.

# Triangle of Wound Assessment<sup>®</sup>

Getting assessment right is key to a successful wound treatment.

Together with healthcare professionals we have developed a holistic wound assessment framework, introducing a systematic approach to assess and manage all areas of the wound.



Consider all three areas of the triangle to support optimal clinical decision making.<sup>33,31</sup>

# An educational programme for healthcare professionals working with wounds

# HEAL

The programme aims to **increase knowledge** of modern wound healing principles and **improve the standard of care** for wound patients around the world.



HEAL consists of 14 in-depth courses addressing different wound care topics, available as e-learning or live seminars. All courses have been peer-reviewed and endorsed by the European Wound Management Association.

<b>General</b> Wound care courses	<i>Skin Integrity</i>	<i>Wound Healing</i>	<i>Wound Assessment</i>	<i>Moist Wound Healing</i>
<b>Speciality</b> Wound care courses	<i>Pressure Ulcers</i>	<i>Diabetic Foot Ulcers</i>	<i>Leg Ulcers</i>	
	<i>Acute Wounds</i>	<i>Moisture Associated Skin Damage</i>	<i>Non-Complex Burns</i>	
<b>Focused</b> Wound care courses	<i>Wound Infections</i>	<i>Wound Pain</i>	<i>Skin Care</i>	<i>Health Economics</i>





Coloplast develops products and services that make life easier for people with very personal and private medical conditions. Working closely with the people who use our products, we create solutions that are sensitive to their special needs. We call this intimate healthcare.

Our business includes Ostomy Care, Continence Care, Wound and Skin Care and Urology Care. We operate globally and employ about 11,000 employees.

Ostomy Care / Continence Care / Wound & Skin Care / Urology Care

Coloplast A/S, Høttedam 1, 3050 Humlebæk, Denmark

[www.coloplast.com](http://www.coloplast.com) The Coloplast logo is a registered trademark of Coloplast A/S.

© 2018-08. All rights reserved Coloplast A/S

