

Photo guide

Case reposts and product evaluations

Ostomy Care / Continence Care / Wound & Skin Care / Urology Care



Before photo

1. Please remove all dressings
2. Clean and debride (if relevant) the wound
3. Remove any unnecessary items around the patient
4. Make sure the background for the photo is not disturbing – e.g. use a plain background
5. Fill in photo label (wound ruler) with date and patient number. Place the label close to the wound (edge of wound must be visible)

Taking the photo

1. Preferably use flash – as it most often provides the best result.
2. Take one photo clearly showing location of wound on body
3. Take photo(s) of the wound
4. Angle: The wound must be photographed from above at an angle of 90° degrees. Hold the camera horizontal to take a landscape shot. If the wound is round, take a photo from both sides.
5. The whole wound, including edges and periwound skin, must be visible in the photo
6. Distance: Use approximately the same distance and angle for all photos. But not closer than 20 cm
7. Make sure the patient's face is not visible

After photo

1. Check that the photo looks OK – if not take a new photo
2. Ask the patient if he/she wants to see the photo



Figure 1:
Unnecessary items and a clutter background (Kentorp, N, Sår (2) 2013)

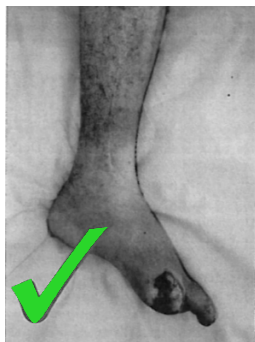


Figure 2:
A neutral background and no unnecessary items. Patient's face not visible. (Kentorp, N, Sår (2) 2013)