

Join the

# Triangle Case Report Challenge

2021

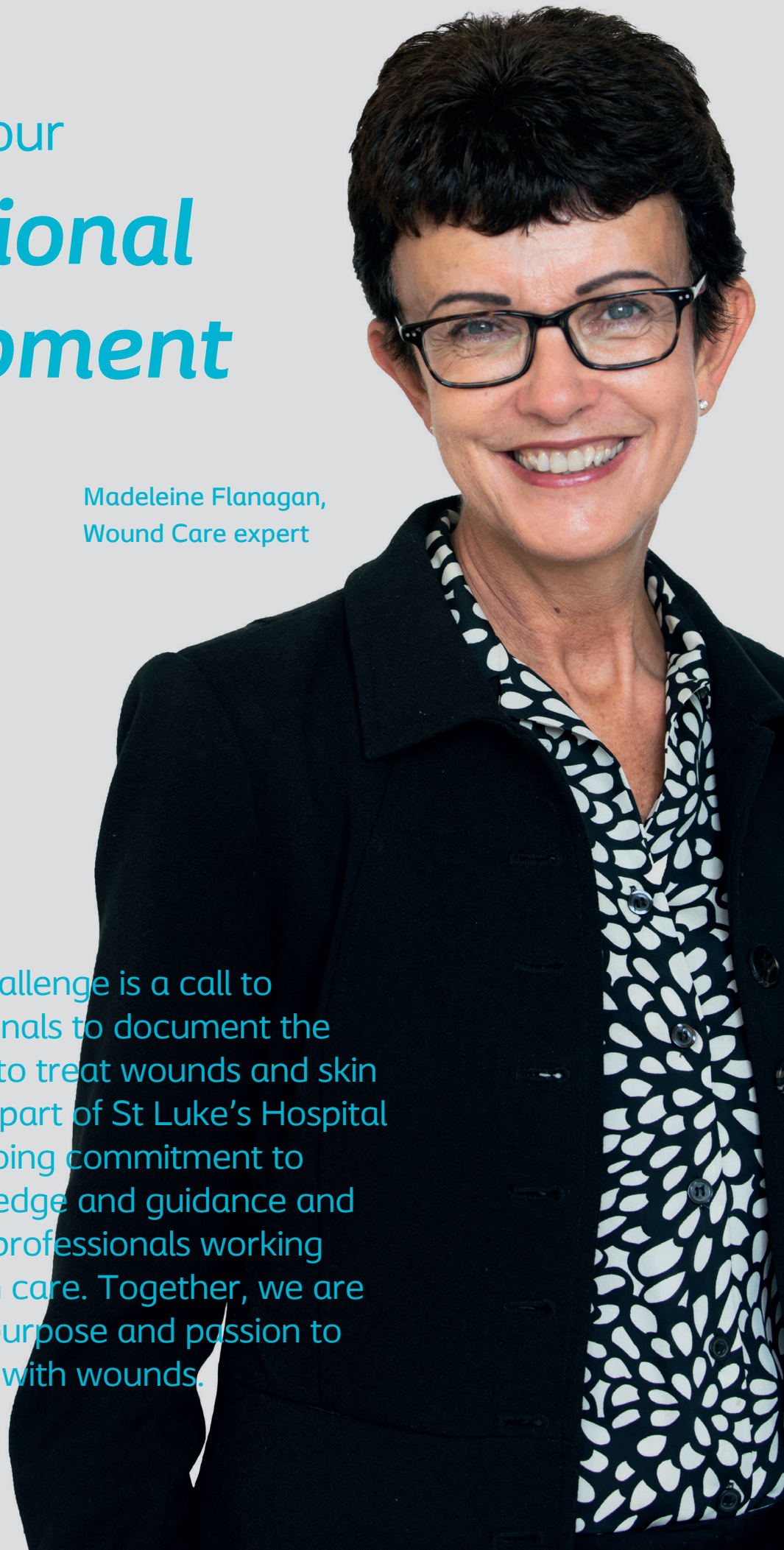




Accelerate your  
***professional  
development***

Madeleine Flanagan,  
Wound Care expert

The Case Report Challenge is a call to healthcare professionals to document the work you are doing to treat wounds and skin care conditions. It is part of St Luke's Hospital and Coloplast's ongoing commitment to share deeper knowledge and guidance and support healthcare professionals working with wound and skin care. Together, we are united by a shared purpose and passion to achieve Fewer days with wounds.



# You can easily join the *Case Report Challenge*

1

Sign up for the case report through  
[visit.coloplast.sg/crc](https://visit.coloplast.sg/crc)



2

**Document your patients wound and develop a case report.**

Use the Triangle of Wound Assessment template to develop your case report. On the sign up site, you will find all the materials necessary to develop your case report.

3

Submit your case report to [slcwcadmin@stluke.org.sg](mailto:slcwcadmin@stluke.org.sg) by 28 Jan 2022.

All submitted case reports will receive \$50 educational credits that can be used on any St Luke's Hospital educational courses.

4

**Two case reports with highest score will receive \$3000 educational credits that can be used on any St Luke's Hospital wound educational courses.**

Submitted case reports are review and score by a panel of wound experts.

5

Author of selected case reports will have the opportunity to share at St Luke's Hospital annual wound conference happening on 11 March 2022.

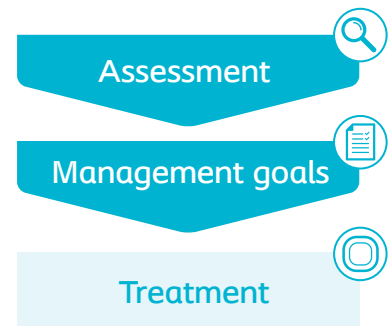
# The Triangle of Wound Assessment

## systematic approach to wound management

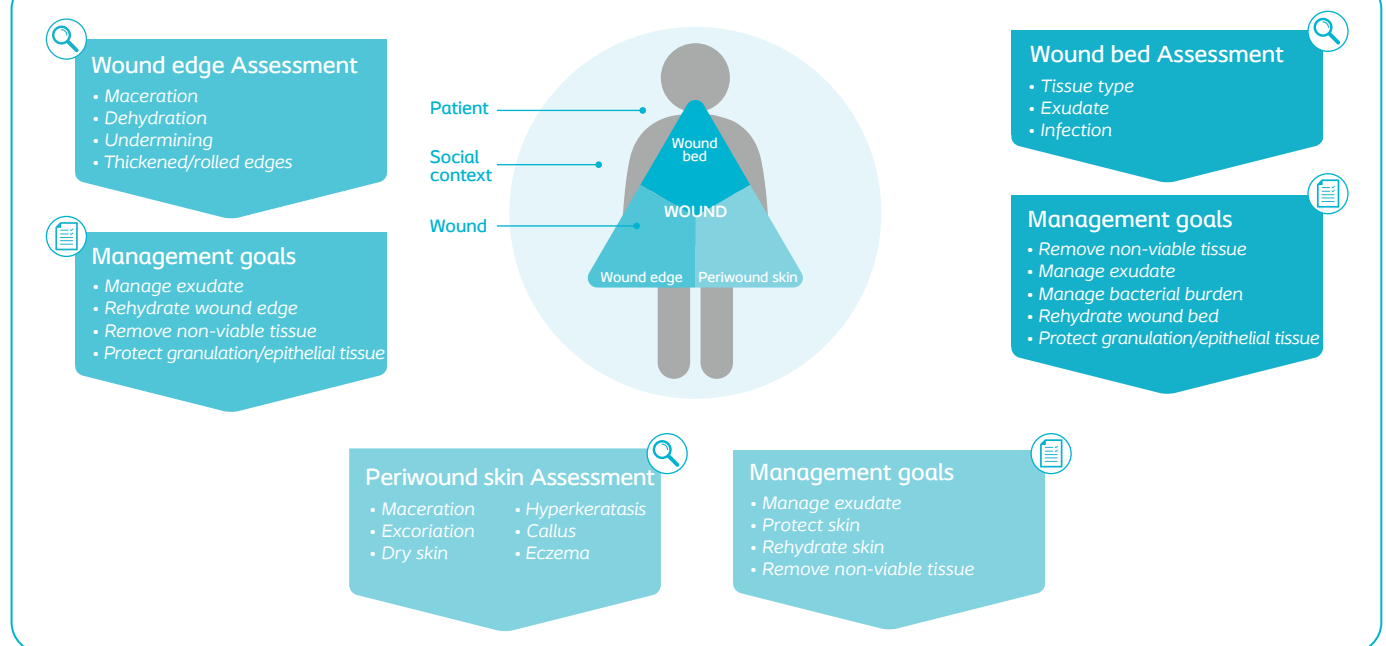
The Triangle of Wound Assessment is a holistic assessment framework supporting you to effectively and confidently manage wounds

Optimal wound management starts with a holistic approach. This will help to more efficiently set management goals, which will increase the potential for better treatment outcomes.

This is achieved through a holistic framework. The Triangle of Wound Assessment provides a framework to assess all three areas of the wound (wound edge, wound bed and periwound skin) while remembering the patient behind the wound within their social context.

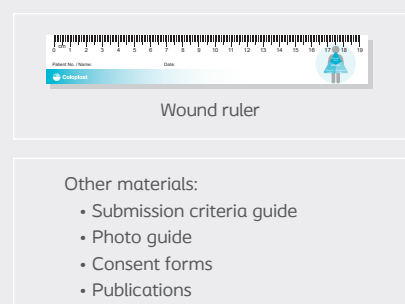
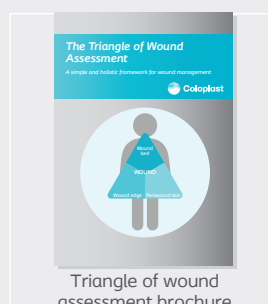
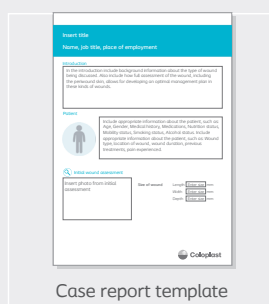
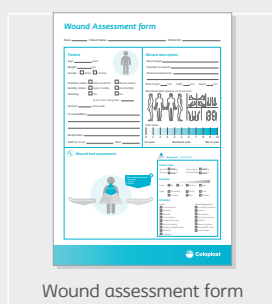


### Use the Triangle of Wound Assessment to develop your case report



Email to [sgadmin@coloplast.com](mailto:sgadmin@coloplast.com) to request for a **Triangle Case Report Challenge Pack**

Case report pack materials:



# Treatment of a pressure ulcer on the right lower limb with a silicone foam dressing

Bernd von Hallern, RN, DGKP, Wound Specialist Germany

## Patient

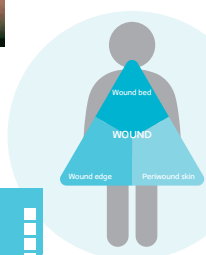


28-year-old male with a neurodegenerative disorder, who was immobile, blind and deaf, presented to the emergency room with an increasing dyspnoea and oedema. As a secondary finding, a pressure ulcer was observed on the right lower limb which was caused by continuous pressure from his wheelchair. The pressure ulcer was reported as being present for 8 weeks. Previous treatment consisted of applying a silicone gauze to the skin necrosis and compression dressings. Different methods of pressure relief had previously failed.

## Initial wound assessment



Size of wound:  
Length 30 mm  
Width 30 mm  
Depth 10 mm

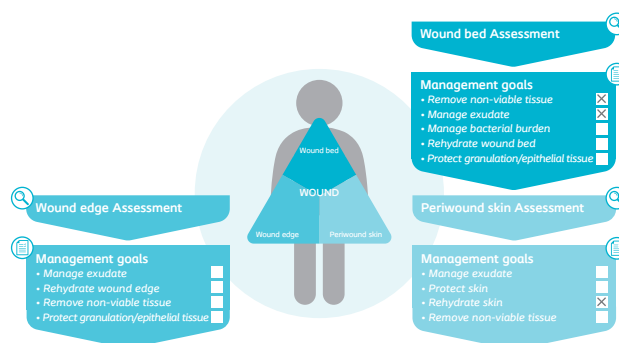


Wound bed Assessment	
• Tissue type	Sloughy
• Exudate	Medium
• Infection	

Wound assessment	
• Maceration	
• Excoriation	
• Dry skin	
• Hyperkeratosis	
• Callus	
• Eczema	

Wound assessment	
• Maceration	
• Dehydration	
• Undermining	
• Thickened/rolled edges	

## Management goals



## Treatment

After cleansing and debridement, the dry skin was treated by barrier cream, which also rehydrated the periwound skin area. In order to manage the exudate, **Biatain® Silicone** was applied to the wound. There was no need for a filler, as the **Biatain Silicone** was able to conform to the wound bed

## Results

### Day 7



For the first 7 days, dressing was changed every day, with daily debridement.

### Day 56

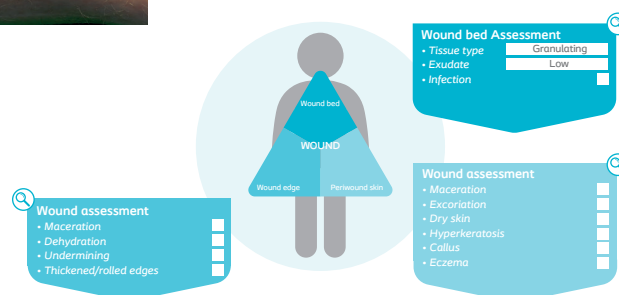


By day 56 there was reduction in length of the wound by 8 mm, and the depth was 0 mm. There was granulating tissue with low exudate.

### Day 19



By day 19, **Biatain Silicone** was being changed every other day. The wound was clean with granulation tissue in the wound bed. There was no maceration of the wound edge or periwound skin. After day 24, **Biatain Silicone** was changed every 3 days.



## Conclusion

Intensive wound treatment resulted in granulation tissue forming in the wound bed. **Biatain Silicone** managed the exudate very well and the dressings ability to conform to the wound bed prevented maceration of the wound edge and periwound skin.



# St Luke's Hospital Educational Wound Courses

## Wound Care (Basic): E-learning & Zoom session

A wound neglected is a wound infected. Join this course, organised by St Luke's Hospital, to be equipped with relevant knowledge and skills in wound care and management.

### COURSE OBJECTIVES:

- Gain relevant knowledge & skills to provide skin care & maintenance of skin health for patients.
- Provide evidence-based care in assessment, prevention & management of pressure injury.
- Understand the available wound care products.
- Apply tips & techniques learnt to provide holistic wound care for patients.

### DAY 1

- Anatomy and physiology of the skin.
- Effects of ageing on the skin.
- Common skin disorders among the elderly.
- General skin assessment types.
- Understand the different type of skin tears and their management.
- Introduction to wound care products.
- Applying appropriate wound dressing.

### DAY 2

- Risk assessment and management of pressure injury.
- Assessment on wound care knowledge.
- Case presentation on skin tear and pressure injury.

### TARGET AUDIENCE:

Registered Nurse, Enrolled Nurses, Nursing Aides

### COURSE DATES:

**Run 1:** 12 Jan & 26 Jan 2022

**Run 2:** 8 Mar & 22 Mar 2022

**Run 3:** 13 Apr & 27 Apr 2022

**Run 4:** 11 May & 25 May 2022

**Run 5:** 7 Jun & 21 Jun 2022

### COURSE TIME:

9am - 5pm (for all days)

### COURSE FEE:

**\$363.80** (Including GST) Prevailing course fee subsidy at 90% for Singaporeans/PRs and 45% for Work Permit Holders working in eligible community care organisations.

## Wound Care (Intermediate) Zoom Session & Face to Face Session

A wound neglected is a wound infected. Join us to learn more about wound care management. Our Intermediate Wound Care course is endorsed by the European Wound Management Association (EWMA).

### COURSE OBJECTIVES:

- Gain skills in wound assessment and evidence-based knowledge in wound management technique.
- Be up to date on the latest wound care products.
- Be empowered to provide holistic wound care for patients.

### DAY 1

- Physiology and factors affecting wound healing.
- General skin assessment of patient.
- Types of wounds.
- Role of a wound nurse.

### DAY 2

- Wound assessment and wound infection.
- Criteria of a wound assessment chart.
- Techniques of obtaining wound specimen for investigation.
- Criteria of an ideal wound dressing.
- Types of wound products and cleansing solutions.

### DAY 3

- Types of stoma, management and complications.
- Discharge planning, patient education on wound and stoma care.

### DAY 4

- Management of pressure injury.
- Introduction to leg ulcers.

### DAY 5 & 7

- Clinical attachment.

### DAY 6

- Clinical attachment, Course assessment: written test (50%), case study presentation (50%).

### TARGET AUDIENCE:

Registered Nurses with minimum 2 years' experience or had previously attended in house wound courses or St Luke's Hospital Wound Care Course.

### COURSE DATES:

**Run 1:** 7 Feb, 9 Feb, 15 Feb, 16 Feb, 21 Feb, 22 Feb & 1 Mar 2022

**Run 2:** 8 Aug, 10 Aug, 16 Aug, 17 Aug, 22 Aug, 23 Aug & 30 Aug 2022

### COURSE TIME:

9am - 5pm (for all days)

### COURSE FEE:

**\$3,745.00** (Including GST) Prevailing course fee subsidy at 90% for Singaporeans/PRs and 45% for Work Pass Holders working in eligible community care organisations.

# St Luke's Hospital Educational Wound Courses

## Negative Pressure Wound Therapy (NPWT) Face to Face Session

**Negative Pressure Wound Therapy (NPWT)** for both surgical and chronic wounds is widely used in healthcare institutions as well as in home care. NPWT helps promote wound healing through contraction and thus reduces hospital stay. Join this course, organised by St Luke's Hospital, to be equipped with the appropriate knowledge, techniques and skills to achieve optimal outcomes.

### COURSE OBJECTIVES:

- Outline the purpose of NPWT.
- Identify the cautions of using NPWT.
- Outline the features and functions of the device.
- Demonstrate the technique of correct application of NPWT.

### DAY 1

Lecture & Discussion on:

- Understanding wound assessment and evidence-based clinical updates of NPWT on wound healing
- Identify types of wounds requiring NPWT
- Understand the application of NPWT on wound healing
- Identify the cautions of using NPWT
- Identify the key features of NPWT devices
- Apply knowledge on troubleshooting for NPWT
- Demo & Hands on Skills Practice on:
- Application of NPWT

### TARGET AUDIENCE:

Registered Nurses, Doctors

### COURSE DATES:

Run 1: 18 Jan 2022

Run 2: 27 Sep 2022

### COURSE TIME:

9am - 5pm

### COURSE FEE:

**\$331.70** (Including GST) Prevailing course fee subsidy at 90% for Singaporeans/PRs and 45% for Work Permit Holders working in eligible community care organisations.

## Wound Debridement (Intermediate) Face to Face Session

Wound bed preparation is an essential part of the wound healing process. Removal of non-viable tissue from wound bed is a fundamental aspect of wound care and conservative wound debridement should only be undertaken by experienced and trained healthcare providers. Join this course, organised by St Luke's Hospital, to be equipped with wound debridement skills.

### COURSE OBJECTIVES:

- Be equipped with advanced knowledge and skills to perform wound debridement

### DAY 1

Lecture & Discussion on:

- Describe the anatomy and physiology of viable and non-viable tissues and structures.
- Recognise anatomical structures and types of tissue commonly seen in sharp debridement.
- Explain how to utilise appropriate debridement modalities to facilitate the phases in physiology of wound healing.
- Identify the types of debridement modalities.
- State the indications and contraindications according to the types of debridement modalities.
- Describe the preparation of sharp wound debridement process.
- Demonstrate sharp debridement techniques.
- Evaluate and document treatment using sharp debridement.
- Discuss the legal implications, and policy and procedures related to sharp debridement.

### TARGET AUDIENCE

Registered Nurse, Doctor

### COURSE DATES:


Run 1: 18 Oct 2022

### COURSE TIME:

9am - 5pm

### COURSE FEE:

**\$781.10** (Including GST) Prevailing course fee subsidy at 90% for Singaporeans/PRs and 45% for Work Pass Holders working in eligible community care organisations.

 Venue: Details will be sent to participants

 Enquiries: 6895 2782  [slwcadmin@stluke.org.sg](mailto:slwcadmin@stluke.org.sg)



**Register Now!**

<https://lms.wizlearn.com/AIC>

Ostomy Care / Continence Care / Wound & Skin Care / Urology Care

**Coloplast A/S Singapore**

International Plaza, 10 Anson Road, #15-18 Singapore 079903

Telephone: 6235 5933 | [www.coloplast.sg](http://www.coloplast.sg)

The Coloplast logo is a registered trademark of Coloplast A/S. © 2019-02. All rights reserved Coloplast A/S.



2 Bukit Batok Street 11

Singapore 659674

Tel: 6563 2281

[general@stluke.org.sg](mailto:general@stluke.org.sg)

